



UNIT 3, 31 BRENDAN DRIVE
NERANG QLD 4211
AUSTRALIA

POSTAL ADDRESS:
PO Box 2252
NERANG QLD 4211
AUSTRALIA

PH: +61 (0)7 5596 5233

INFO@ATTILAINSTRUMENTS.COM

WWW.ATTILAINSTRUMENTS.COM





WELCOME TO ATTILA INSTRUMENTS

ABOUT US

**ESTABLISHED 1987,
BASED AND OPERATING
IN NERANG ON
AUSTRALIA'S
BEAUTIFUL GOLD
COAST**

**ATTILA INSTRUMENTS
OFFERS COST
EFFICIENT SERVICE,
ADJUST, REPAIR AND
CALIBRATION ON
INSTRUMENTATION,
MEASURING
EQUIPMENTS AND
DIAGNOSTIC TOOLING
NATIONWIDE AND TO
INTERNATIONAL
CUSTOMERS**

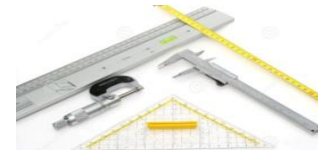
A MEASURING INSTRUMENT IS A DEVICE FOR MEASURING A PHYSICAL QUANTITY.



IN THE PHYSICAL SCIENCES, QUALITY ASSURANCE, AND ENGINEERING, MEASUREMENT IS THE ACTIVITY OF OBTAINING AND COMPARING PHYSICAL QUANTITIES OF REAL-WORLD OBJECTS AND EVENTS. ESTABLISHED STANDARD OBJECTS AND EVENTS ARE USED AS UNITS, AND THE PROCESS OF MEASUREMENT GIVES A NUMBER RELATING THE ITEM UNDER STUDY AND THE REFERENCED UNIT OF MEASUREMENT.

MEASURING INSTRUMENTS, AND FORMAL TEST METHODS WHICH DEFINE THE INSTRUMENT'S USE, ARE THE MEANS BY WHICH THESE RELATIONS OF NUMBERS ARE OBTAINED.

ALL MEASURING INSTRUMENTS ARE SUBJECT TO VARYING DEGREES OF INSTRUMENT ERROR AND MEASUREMENT UNCERTAINTY.



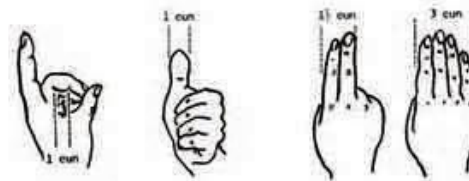


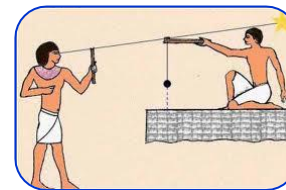
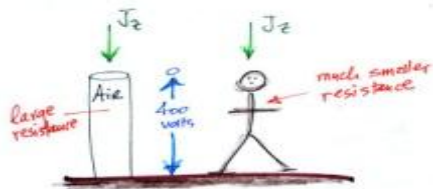
THE FORMAL DEFINITION OF CALIBRATION

BY THE INTERNATIONAL BUREAU OF WEIGHTS AND MEASURES



OPERATION THAT, UNDER SPECIFIED CONDITIONS, IN A FIRST STEP, ESTABLISHES A RELATION BETWEEN THE QUANTITY VALUES WITH MEASUREMENT UNCERTAINTIES PROVIDED BY MEASUREMENT STANDARDS AND CORRESPONDING INDICATIONS WITH ASSOCIATED MEASUREMENT UNCERTAINTIES (OF THE CALIBRATED INSTRUMENT OR SECONDARY STANDARD) AND, IN A SECOND STEP, USES THIS INFORMATION TO ESTABLISH A RELATION FOR OBTAINING A MEASUREMENT RESULT FROM AN INDICATION.





THE IMPORTANCE OF CALIBRATION

YOUR EQUIPMENT CAN GO OUT OF CALIBRATION YOU MAY NOT BE AWARE. IT WILL APPEAR TO BE WORKING CORRECTLY BUT MAY NOT BE ACCURATE TO THE LEVEL IT IS DESIGNED FOR.

IF YOUR WORK MEETING REGULATIONS THEN YOU NEED TO KNOW IT IS GIVING YOU THE CORRECT READINGS, INFORMATION.

ONLY BY TESTING YOUR EQUIPMENT BY QUALIFIED INSTRUMENT TECHNICIAN UNDER CONTROLLED CONDITIONS TO A KNOWN STANDARD CAN YOU BE ASSURED OF ITS ACCURACY.





**ATTILA INSTRUMENTS OFFERS COST EFFICIENT SERVICE,
ADJUST, REPAIR AND CALIBRATION ON A WIDE RANGE OF
INSTRUMENTATION, MEASURING EQUIPMENTS AND DIAGNOSTIC
TOOLING NATIONWIDE AND TO INTERNATIONAL CUSTOMERS
AND**

**BECAUSE MOST INSTRUMENTS AND MEASURING DEVICES ARE
ADJUSTABLE, YES WE DO ADJUST AND CORRECT READINGS TO
THE RELEVANT SPECIFICATIONS AND STANDARDS**



**WE HAVE EXPERIENCE AND CAPABILITIES TO REPAIR
DIFFERENT KIND OF FAULTY INSTRUMENTS TO COMPONENT
LEVEL ALSO SUPPORTED BY OUR CONSTANTLY EXPANDING
TECHNICAL LIBRARY**



**THANK YOU FOR YOUR TIME
WE HOPE YOU ENJOYED THIS SHORT
PRESENTATION AND LOOKING FORWARD TO
MEET YOU AT ATILA INSTRUMENTS**



UNIT 3, 31 BRENDAN DRIVE
NERANG QLD 4211
AUSTRALIA

POSTAL ADDRESS:
PO Box 2252
NERANG QLD 4211
AUSTRALIA

PH: +61 (0)7 5596 5233

INFO@ATTILAINSTRUMENTS.COM

WWW.ATTILAINSTRUMENTS.COM

ATTILA INSTRUMENTS 2019

AUSTRALIA